

17⁺⁵ (ADJUSTABLE)

NOTE
-ALL DIMENSION IN mm

PROPRIETARY AND CONFIDENTIAL
THE INFORMATION CONTAINED IN THIS DRAWING IS THE SOLE PROPERTY OF <INSERT COMPANY NAME HERE>. ANY REPRODUCTION IN PART OR AS A WHOLE WITHOUT THE WRITTEN PERMISSION OF <INSERT COMPANY NAME HERE> IS PROHIBITED.

0001		18/06/2009			
0002		18/06/2009			
REV.	DESCRIPTION	DATE	EXECUTOR	CHK'D	APPV'D
CODE:	MATERIAL:		MATERIAL CODE:	WEIGHT Kg:	
18272C310YNN	/			69.32	

enomatic®
wine serving systems

TITLE: ENOLINE 8 BOTTLES S2 ELITE

DWG NO. EC2-YM000

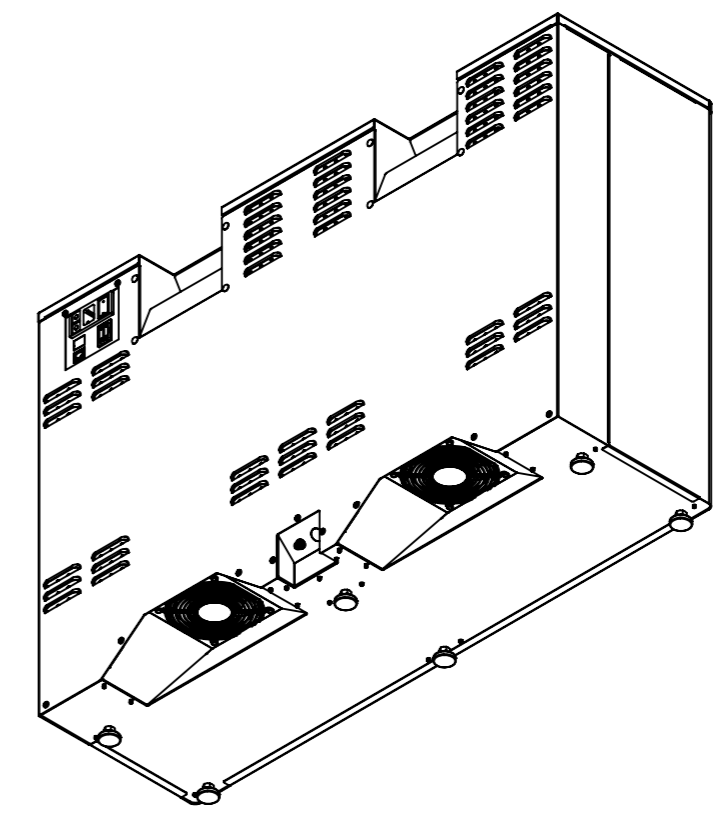
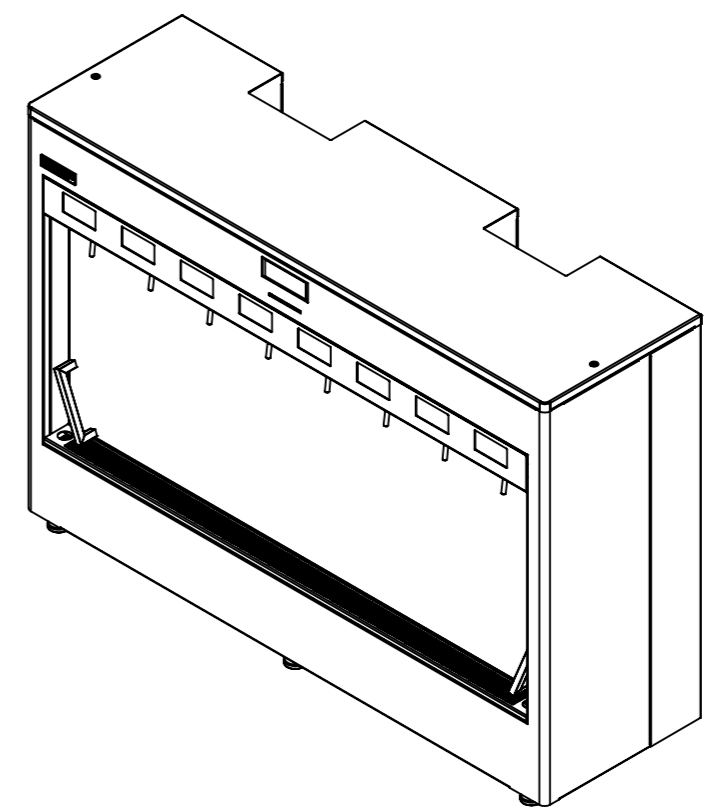
SCALE:1:10 LANGUAGE: ENGLISH FINISH: THICKNESS: SHEET 1 OF 4

A3 REV.:0005

ENOLINE 8 BOTTLES ELITE		
SERIES 2		
SIZE (mm)	HEIGHT (MIN -MAX)	670 - 675
	WIDTH	972
	DEPTH	303
WEIGHT (Kg)		65
FINISH MATERIALS		STAINLESS STEEL 304
ELETRICAL FEATURES	VOLTAGE (V)	110÷220
	FREQUENCY (Hz)	60÷50
	WATTS (W)	400
	FUSES	2X10 Amp
N° 2 TERMO ELETRIC MODULES		
N° 1 T.E.M. SPECIFICATION	COOLING POWER	102 W
	ELECTRIC POWER	130 W
	NOMINAL CURRENT	5.6 Amp
	INITIAL CURRENT	6.6 Amp
	VOLTAGE	24 V DC
	TEMPERATURE CONTROL	ELECTRONIC CONTROLLER
	DEFROST METHOD	AUTOMATIC VIA ELECTRONIC CONTROLLER
	METHOD OF DISPLAYNG TEMPERATURE	DIGITAL
NITROGEN (OR ARGON) GAS PRESSURE		0.16 BAR
N° 8 ELECTRIC PISTON TO LIFT BOTTLES		
N° 1 ELECTRIC PISTON	VOLTAGE	24 V DC
	NOMINAL CURRENT	1 Amp
	MAX CURRENT	2.2 Amp
ACCEPTER BOTTLES	HEIGHT	280÷360
	Ø MAX	110

ROOM TEMPERATURE + - 0,5°C	MINIMUM TEMPERATURE REACHBLE AFTER 3 HOURS	
	C°	F°
18	5,5	41,9
20	6,2	43,2
22	6,6	43,9
24	7,0	44,6
26	7,5	45,5
28	7,9	46,2
30	8,2	46,8
32	8,8	47,8

PROPRIETARY AND CONFIDENTIAL
 THE INFORMATION CONTAINED IN THIS DRAWING IS THE SOLE PROPERTY OF <INSERT COMPANY NAME HERE>. ANY REPRODUCTION IN PART OR AS A WHOLE WITHOUT THE WRITTEN PERMISSION OF <INSERT COMPANY NAME HERE> IS PROHIBITED.



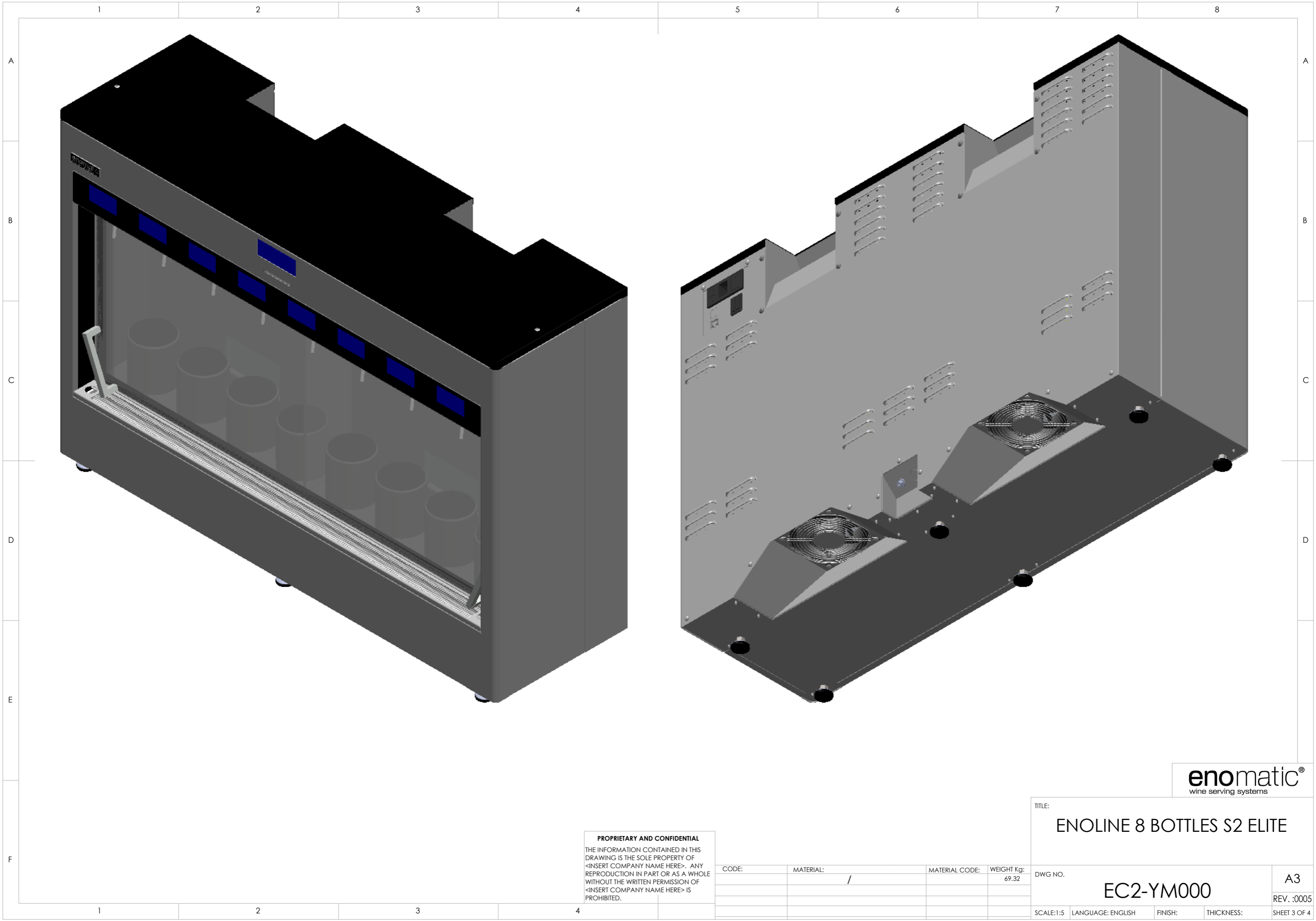
TITLE: ENOLINE 8 BOTTLES S2 ELITE

DWG NO. EC2-YM000

SCALE:1:10 LANGUAGE: ENGLISH FINISH: THICKNESS: SHEET 2 OF 4

A3 REV. :0005

CODE:	MATERIAL:	MATERIAL CODE:	WEIGHT Kg:
	/		69.32



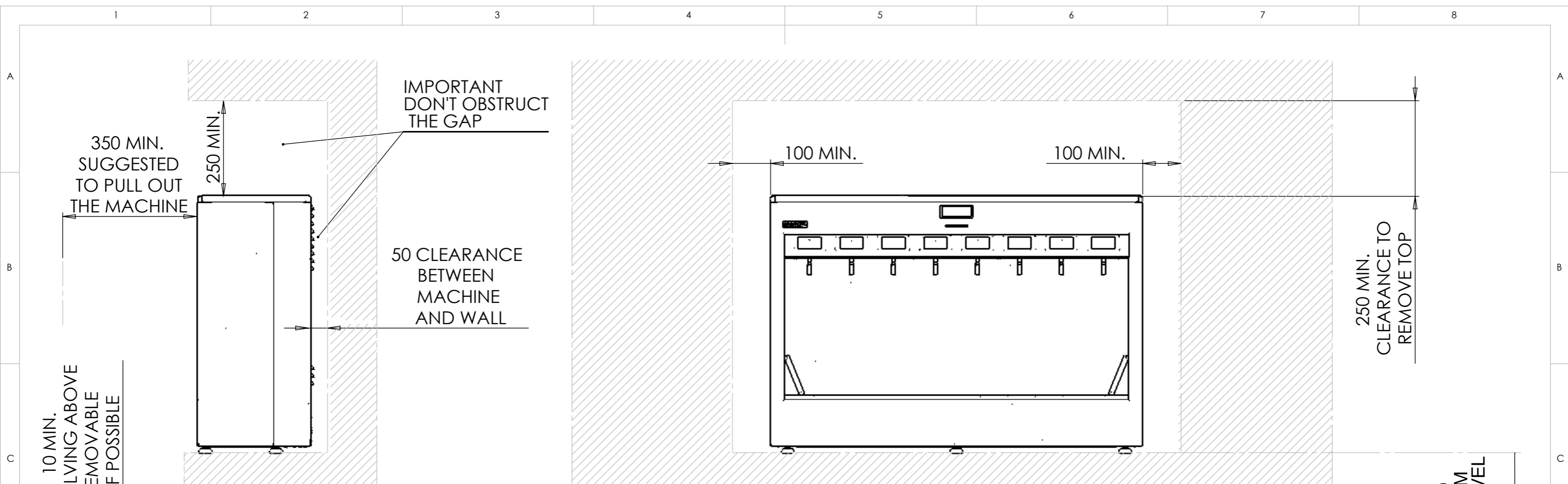
enomatic®
wine serving systems

TITLE:		ENOLINE 8 BOTTLES S2 ELITE	
DWG NO.		EC2-YM000	
SCALE:1:5		LANGUAGE: ENGLISH	FINISH:
THICKNESS:		SHEET 3 OF 4	

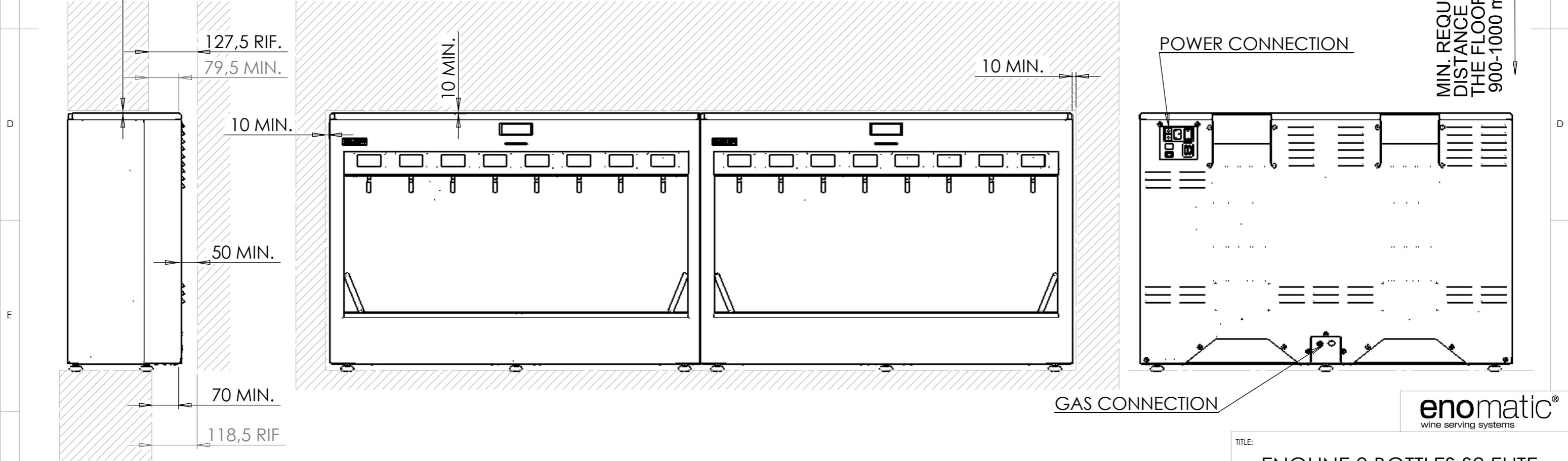
PROPRIETARY AND CONFIDENTIAL
THE INFORMATION CONTAINED IN THIS DRAWING IS THE SOLE PROPERTY OF <INSERT COMPANY NAME HERE>. ANY REPRODUCTION IN PART OR AS A WHOLE WITHOUT THE WRITTEN PERMISSION OF <INSERT COMPANY NAME HERE> IS PROHIBITED.

CODE:	MATERIAL:	MATERIAL CODE:	WEIGHT Kg:
	/		69.32

A3
REV. :0005



1 - EXAMPLE INSTALLATION



2 - EXAMPLE INSTALLATION

PROPRIETARY AND CONFIDENTIAL
 THE INFORMATION CONTAINED IN THIS DRAWING IS THE SOLE PROPERTY OF <INSERT COMPANY NAME HERE>. ANY REPRODUCTION IN PART OR AS A WHOLE WITHOUT THE WRITTEN PERMISSION OF <INSERT COMPANY NAME HERE> IS PROHIBITED.

CODE:	MATERIAL:	MATERIAL CODE:	WEIGHT Kg:
	/		69.32

TITLE: ENOLINE 8 BOTTLES S2 ELITE	
DWG NO. EC2-YM000	A3
SCALE:1:5	LANGUAGE: ITALIANO
FINISH:	THICKNESS:
SHEET 4 OF 4	